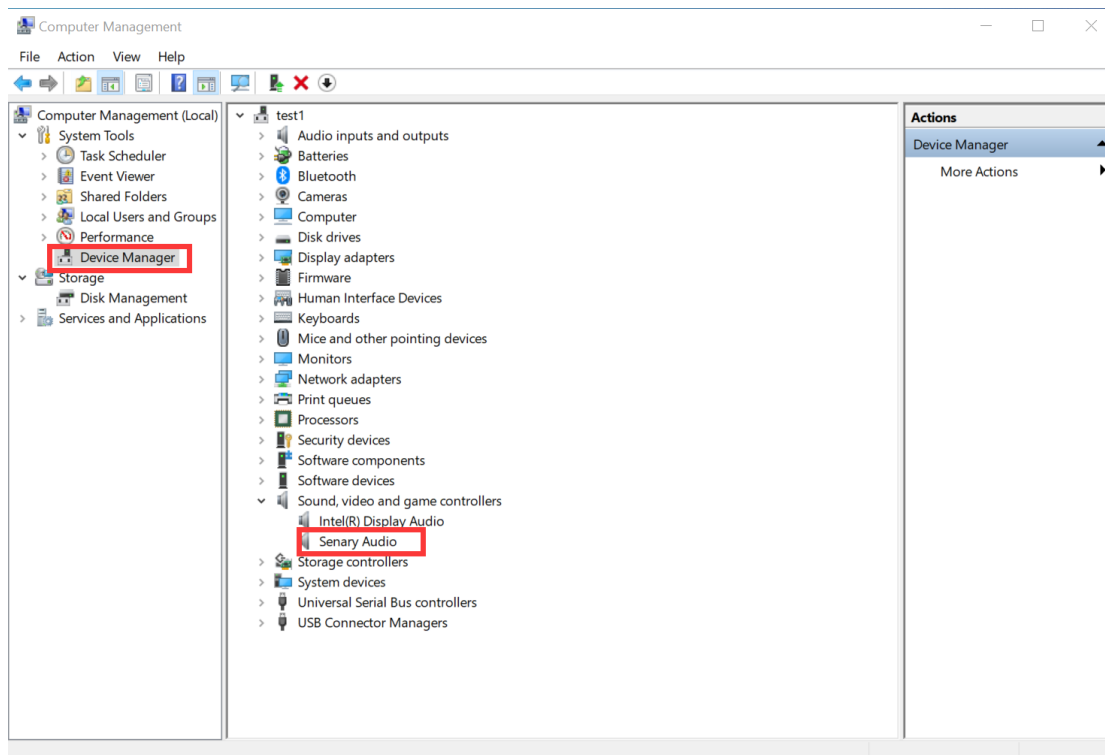
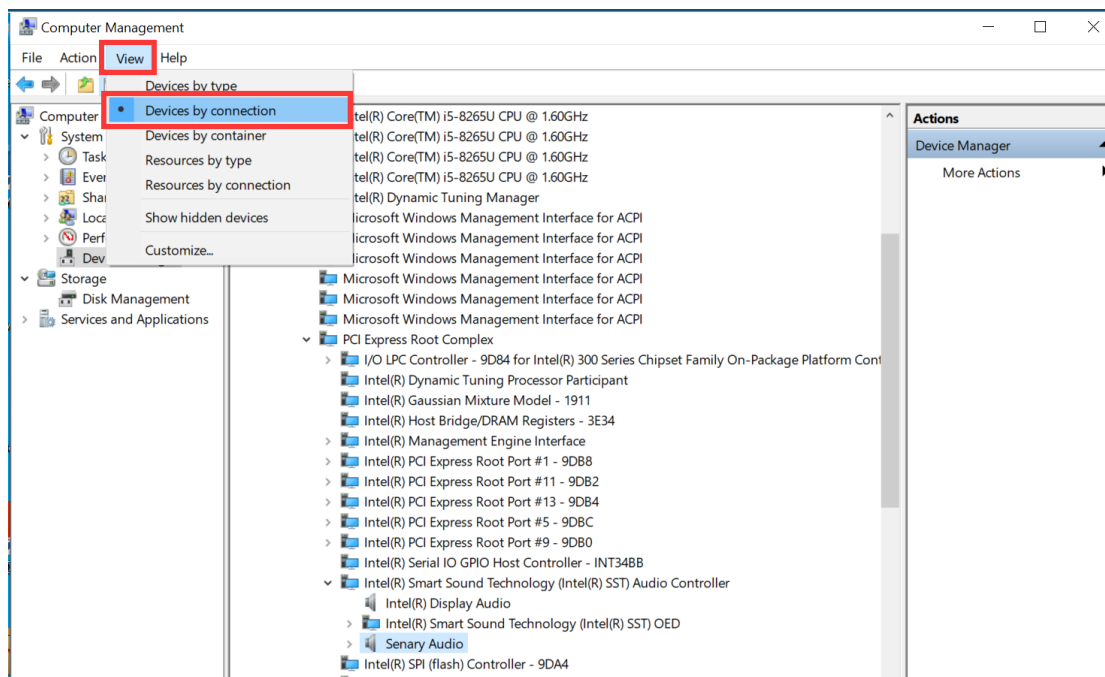


Uninstall device

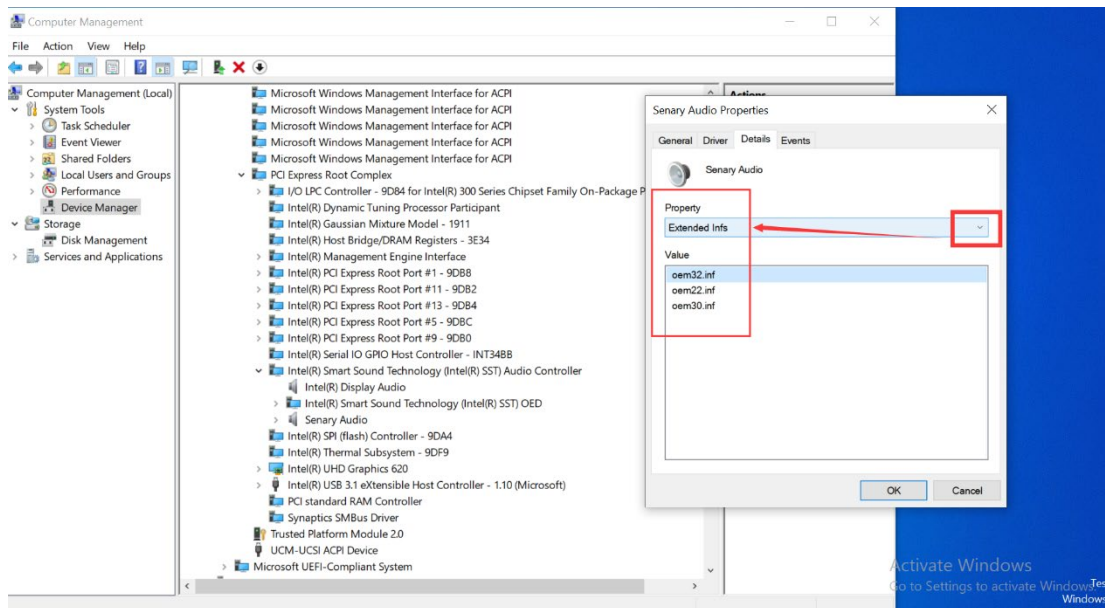
Step1: Right-click on "This PC" and select "Manage" to enter device manager. Then select "Senary Audio" device.



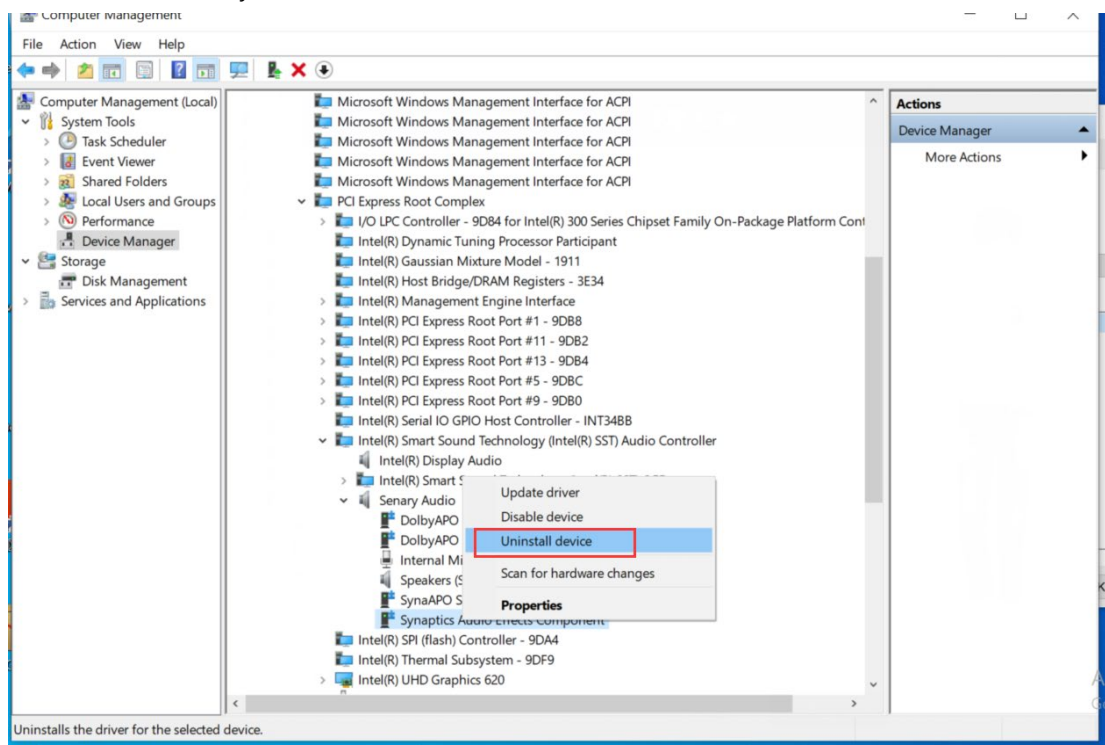
Step2: Select "View" -> "Devices by connection"



Step3: Right-click on "Senary Audio" -> "Properties", then switch to the "Details" tab -> "Extended Info", record these file names.

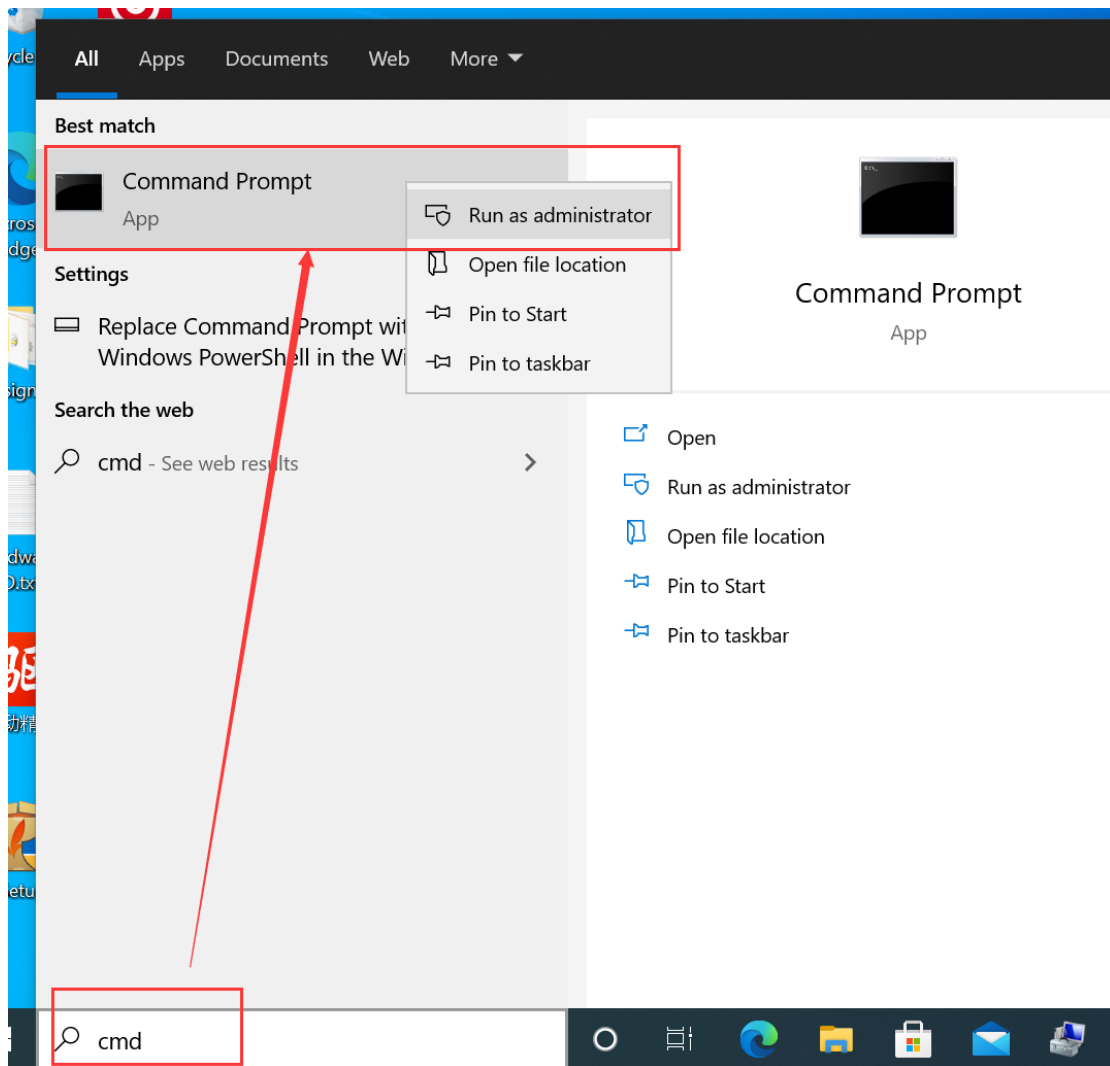


Step4: Uninstall all the component devices under the “Senary Audio” device, and finally uninstall the “Senary Audio” device itself.



Note: don't refresh the device manager, and don't click the “Scan for hardware changes” option.

Step5: Search “cmd” and right-click as “Run as administrator”.



Step6: Input "pnputil /delete-driver oemxx.inf ". Fill in all the numbers recorded from step 3.

